



SPECIAL FEATURES

- CE APPROVED PRESSURE TRANSMITTER.
- LOCAL DISPLAY WITH 4 to 20 mA OUTPUT FOR PLC/PID AND DATA LOGGERS.
- SOLID FRONT CASE FOR SAFETY
- JELLY FILLED MOVEMENT FACILITATE USAGE IN VIBRATION ZONES TO AVOID DAMAGES TO ITS MECHANISM.
- SUITABLE FOR HOMOGENIZER MACHINES.
- STANDARD FOLLOWED IN GENERAL EN 837-3.

APPLICATIONS

THESE GAUGES ARE BEING USED IN APPLICATIONS WHERE HYGIENE IS OF PRIME IMPORTANCE LIKE DAIRY, FOOD, ICE CREAM, BEVERAGES, PHARMACEUTICAL INDUSTRIES & STERILIZATION.



SPECIFICATIONS

STANDARD VERSION : 100 mm

PRESSURE TRANSMITTER

| | | |
|---------------------|---|-------------------|
| Input Pressure | : | Refer range table |
| Type | : | Gauge |
| System | : | 2 Wire |
| Supply | : | 24 VDC |
| Output | : | 4-20 mA |
| Accuracy | : | 0.5% of FS |
| Ambient Temperature | : | 0 to 50°C |
| Process Temperature | : | -25 to 80°C |
| Process Connection | : | Refer options |
| Electric Wiring | : | DIN connector |
| Response Time | : | 50 mSec (Typical) |
| Sensing Element | : | AISI 316L |

HOMOGENIZER PRESSURE GAUGE

| | | |
|---------------------|---|---|
| Accuracy | : | ±1.6% of F. S. |
| Ambient temperature | : | - 25°C to + 65°C |
| Process temperature | : | -25 to 80°C |
| Operating pressure | : | 75% of Scale Value |
| Mounting | : | Direct Bottom |
| Case & Bezel | : | AISI 304 SS, Solid Front, Bayonet Type |
| Bourdon | : | AISI 316L SS |
| Socket | : | AISI 316L SS (Directly Welded to Case) |
| Movement | : | AISI 304 SS (Jelly filled) |
| Joints | : | Tig Argon Arc Welding |
| Protection | : | IP 65 |
| Dial | : | Aluminum, black graduation on white background |
| Pointer | : | Aluminum, black coloured micrometer zero adjustable |
| Window | : | Shatterproof / Safety Glass |
| Blow off Disc | : | AISI 304 SS |
| Gasket & 'O' Ring | : | Neoprene |
| Sealing liquid | : | Food Grade Oil |

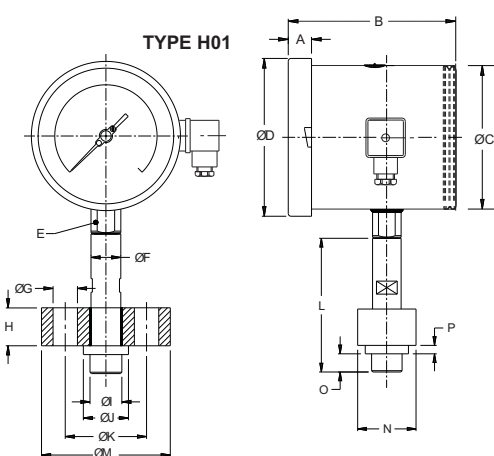
Temperature effect:

The variation of indication caused by effects of temperature is to be calculated by below formula; which is to be added in the specified accuracy while measurement :-

Formula : $\pm 0.08 \times (t_2 - t_1) \% \text{ of F. S.}$

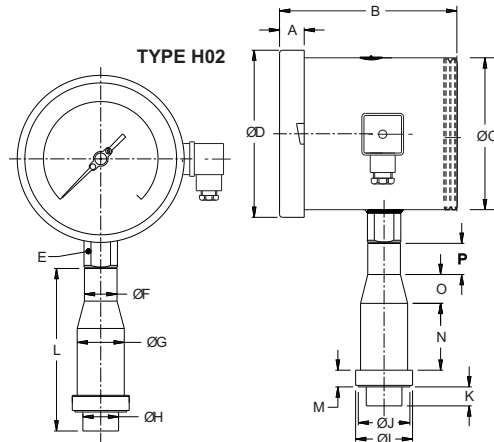
where t_1 = reference temperature (+20°C) and t_2 = ambient temperature in °C.

DIMENSIONS - STANDARD VERSION



FLANGE CONNECTION

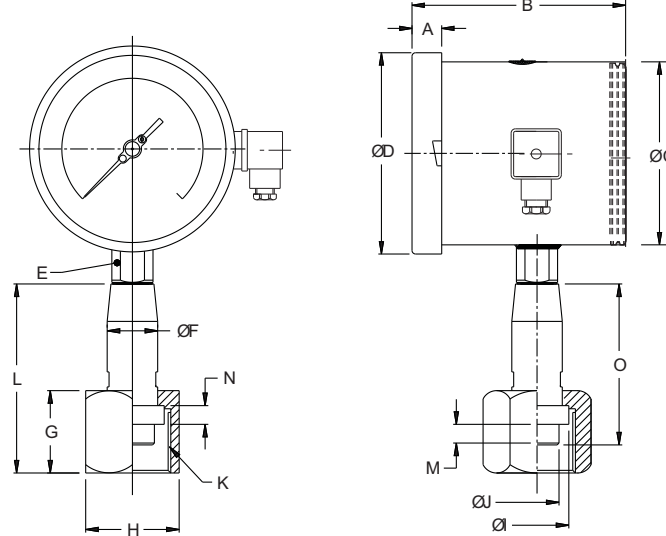
| NS | A | B | ØC | ØD | E | ØF | ØG | H | ØI | ØJ | ØK | L | ØM | N | O | P | Weight in gram (With Box) |
|-----|------|----|-----|-----|----|----|----|----|------|------|----|-----|----|----|----|-----|---------------------------|
| 100 | 12.5 | 89 | 100 | 111 | 22 | 22 | 18 | 28 | 23.5 | 33.3 | 60 | 102 | 95 | 45 | 13 | 6.5 | 1500.0 |



WITHOUT FLANGE CONNECTION

| NS | A | B | ØC | ØD | E | ØF | ØG | ØH | ØI | ØJ | K | L | M | N | O | P | Weight in gram (With Box) |
|-----|------|----|-----|-----|----|------|----|------|------|----|----|-------|----|------|----|----|---------------------------|
| 100 | 12.5 | 89 | 100 | 111 | 22 | 21.5 | 31 | 23.5 | 37.5 | 34 | 12 | 106.5 | 11 | 44.5 | 19 | 20 | 1400.0 |

TYPE H03



1 1/4" BSP(F) CONNECTION

| NS | A | B | ØC | ØD | E | ØF | G | H | ØI | ØJ | K | L | M | N | O | Weight in gram (With Box) | |
|-----|------|----|-----|-----|----|----|----|-----|----|----|------|---------------|-----|----|----|------------------------------|--------|
| 100 | 12.5 | 89 | 100 | 111 | 22 | 27 | 44 | A/F | 50 | 34 | 23.5 | 1 1/4" BSP(F) | 101 | 10 | 10 | 85 | 1400.0 |

Notes : • Drawings are not to scale. • All Dimensions are in mm. • NS = Nominal Size

HOW TO ORDER

Example

BASIC MODEL

BZ

CODE

NOMINAL SIZE

F
100 mm

X

TYPE OF MOUNTING

2 DIRECT BOTTOM ENTRY

X

GAUGE CONNECTION

H01 FLANGE H02 WITH OUT FLANGE (Standard) H03 1 1/4" BSP (F)

XXX

RANGE (in kg/cm² or bar)

*Consult factory for price & delivery.

0/160* 0/250* 0/400 (Standard) 0/600* 0/1000*

0/250
kg/cm²

OPTIONAL EXTRAS

PW FIVE POINT CALIBRATION CERTIFICATE
SX SS TAG PLATE
SJ MAXIMUM READING POINTER WITH PLEXI GLASS

TB HELIUM LEAK TEST
RH CUSTOM DESIGNED DIAL
GH MATERIAL TEST CERTIFICATES*

XX

* MATERIAL TEST CERTIFICATES WILL BE PROVIDED FOR WETTED PARTS ONLY WITH CHEMICAL COMPOSITION TESTING. FOR OTHERS, PLEASE CONSULT FACTORY.

Ordering Example: BZ - X - X - XXX - 0-250 - XX

FOR OTHER OPTIONAL ITEMS, PLEASE CONTACT FACTORY FOR DELIVERY AND MINIMUM QUANTITY OF ORDER.

Note : Specifications and dimensions given in this product catalogue represents the state of engineering at the time of printing. Modifications may take place and materials specified may be replaced by others without prior notice.